

HWAA Championships

April 2, 2022



Site Host Contact Information

Site Coordinator:

Jeremy Krug

Site Coordinator Contact Information Before Day of Contest:

(Jeremy.krug@bpsne.net, 417-773-6776)

Contact Information Day of Contest:

Jeremy Krug (Jeremy.krug@bpsne.net, 417-773-6776)

Charles Wright (charles.wright@bpsne.net, 402-297-7766)

HWAA President: Jayson Ross

president@hwaa.org

SITE ADDRESS

1401 High School Dr.

Bellevue, NE 68005



Bellevue East High School Band
1401 High School Drive
Bellevue, NE 68005
(402) 293-4174

<http://www.chieftainband.com/>

Charles A. Wright, Director of Bands - charles.wright@bpsne.net
Jeremy Krug, Associate Band Director - Jeremy.krug@bpsne.net

On Behalf of Chieftain Nation, our students and staff,

I would like to welcome all of the groups, families and friends attending this year's HWAA Championships. At Bellevue East, we believe in ensuring that our students receive the best learning opportunities and experience a high school can offer. Being able to host and perform in events like this help create those experiences for our students.

Bellevue East has a strong tradition of excellence in the performing arts, and we are excited to share our students' talents with you and to see all the other outstanding programs perform. All participants in today's competition put in a tremendous amount of time throughout the school year, balancing extracurricular activities and academics at the highest level.

If I can be of assistance during the competition, please don't hesitate to contact me.

A handwritten signature in cursive script that reads "Charles A. Wright".

Charles A. Wright
Director of Bands
Bellevue East High School
1401 High School Dr.
Bellevue, NE 68005

DIRECTIONS TO BELLEVUE EAST HIGH SCHOOL

- Take US-75 to Cornhusker Road and turn east towards Bellevue
- Follow Cornhusker Road as it turns into Harvell Drive
- Turn right onto Lincoln Road
- Turn left onto High School Drive

PARKING

- Spectator Parking: Parking lot on the west side of the school, in front of the main entrance near the football stadium.
- Bus Parking: Parking lot in front of BJSA building.
- Equipment Truck Parking: Parking area on the south side of the school.

UNIT CHECK IN

- Please check in upon arrival to the school at the MAIN ENTRANCE building entrance.
- There will be a table at the main entrance staffed with parent and student volunteers to help check you in and show you to your designated area.

EQUIPMENT DROP OFF

- For Novice and Regional A guard units tarp and Oversized prop drop off will be at the north gym entrance. It is highly suggested to stop there first before you drop by check in.
- **A/Open Guards cannot put tarps or props in the hallway until after the last winds unit has come off of the floor.**
- Percussion/Winds equipment drop off will be at the cafeteria doors on the east side of the school. Percussion/Winds cases should remain on the truck/bus/car for easier loading after the show.
- Once items are dropped off, trucks will be directed to the designated equipment truck parking area. This is not a check-in area. Students/parents unloading equipment will need to go with their units to get show passes.

TEAM AREAS

- All belongings may be stored in your designated area on the first floor of the school. (See Map for specific location.)
- Performers should come in costume.
- **There will be a tarp folding space in the center of the cafeteria.**

WARM-UP AREA

- Units have been assigned a Warm-up Area. Groups may use the time as they see fit.
- Percussion/Winds Units are NOT permitted to march in warm-up.
- Warm-up area supervisors will alert units when there are five minutes and one-minute remaining.
- Units must leave on time to allow for transit to the on-deck area, as well as to allow the unit after them the full amount of warm-up time.

PERFORMANCE AREA

- This show will use a vertical timeline for percussion and winds entering on the back right of floor and exiting on the front left from the audience perspective.
- This show will use a vertical timeline for guard going starting on front left of the floor and exiting in the back right from the audience perspective.
- Units will wait to perform in the designated “on-deck” areas at the designated time.
- **Percussion/Winds** Following warm-up, ensembles will travel towards the gym holding area and enter from the **South** side of the gym. Ensembles will exit the **North** side of the gym and move directly outside for loading while the next group performs. Be sure that your equipment transportation is in position to begin loading right after your performance time.
- **Guards** will enter the performance gym from the **North** side. Units will exit from the south side. You can arrange to pick up your tarps and equipment from the cafeteria door on the east side of the school.
- Music sound checks are recommended for guards.
- Music checks must be done prior to the start of the show or during the class breaks.
- We can accommodate iPod/iPad/MP3 players, but prefer an mp3 file.
- One extension cord will be provided on the front and back sideline in the center.

SPECTATOR ENTRANCE

- Spectators should enter through the entrance labeled SOUTH GYM on the west side of the school.
- There will be overflow seating for performers to spectate on the east side of the gym.
- There will be parent and student volunteers at each door to the performance area allowing entrance between performances and during breaks.

CONCESSIONS

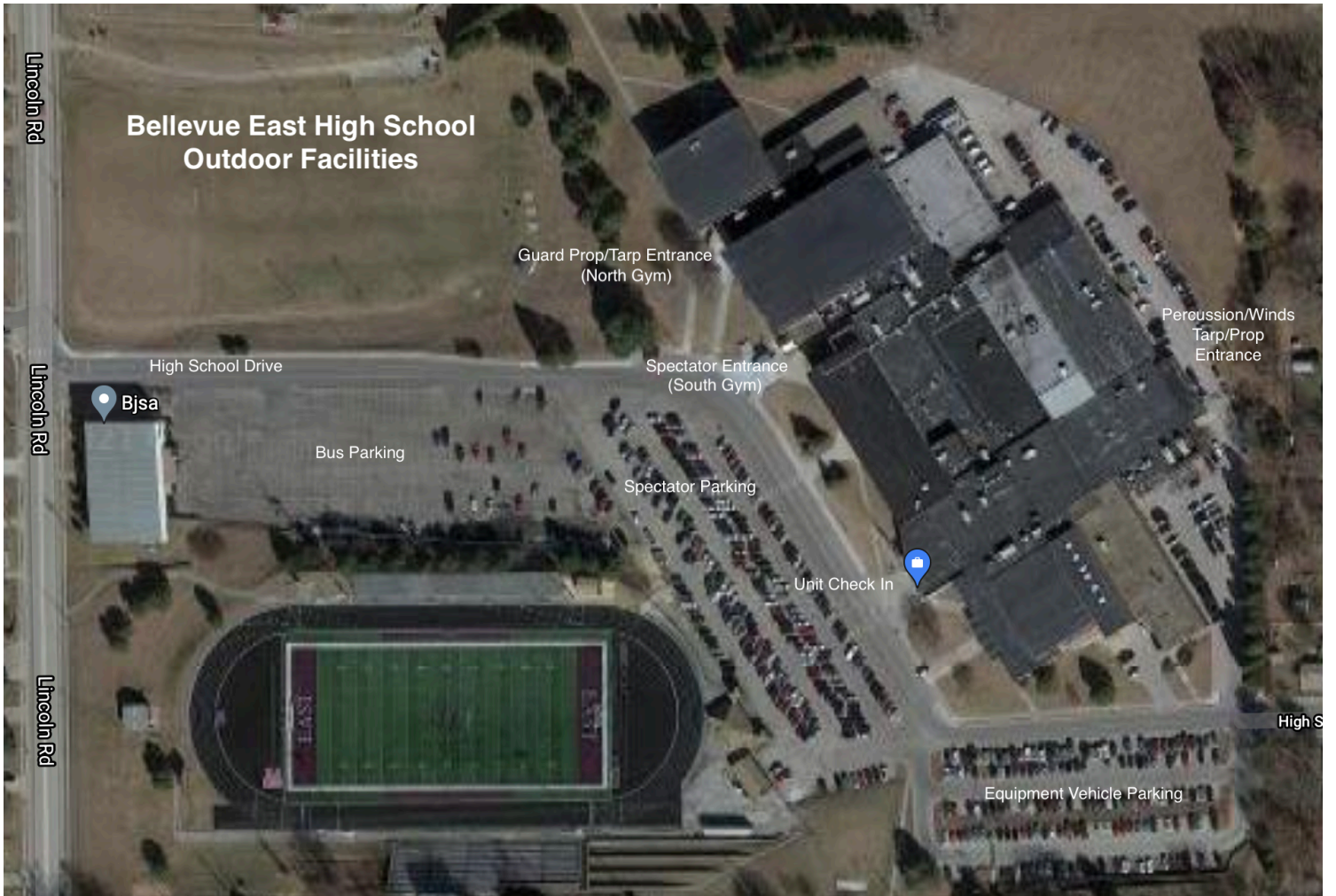
- There will be concessions available to spectators and participants in the lobby of the SOUTH GYM.

ADDITIONAL INFORMATION

- In accordance with HWAA Membership and Contest Rules, Section VII.E Units will receive free admission for all performers plus 7 staff/parent admissions. All others must pay admission.
 - This will be 2 for front side admission and 5 for back side admission.
- In accordance with HWAA Membership and Contest Rules, Section VII.F
 - Section 1: Flash photography is strictly prohibited during the performance, as it is distracting to the performers and may cause injury. Photography without the use of flash permitted
 - Section 2: There shall be no public recording of any kind at all HWAA events.
 - The video recording policy shall apply to all video recorders, camcorders, digital cameras, cell phones, iPads, tablets, and other devices with video and audio capability.

COVID-19 PROTOCOLS

- In the Bellevue Public Schools, face coverings are optional, but are **STRONGLY RECOMMENDED** for all who are unvaccinated. These protocols may change at any time base on recommendations by Sarpy County Health Department.



Bellevue East High School Outdoor Facilities

Lincoln Rd

Lincoln Rd

Lincoln Rd

Bjsa

High School Drive

Bus Parking

Spectator Parking

Guard Prop/Tarp Entrance
(North Gym)

Spectator Entrance
(South Gym)

Peroussion/Winds
Tarp/Prop
Entrance

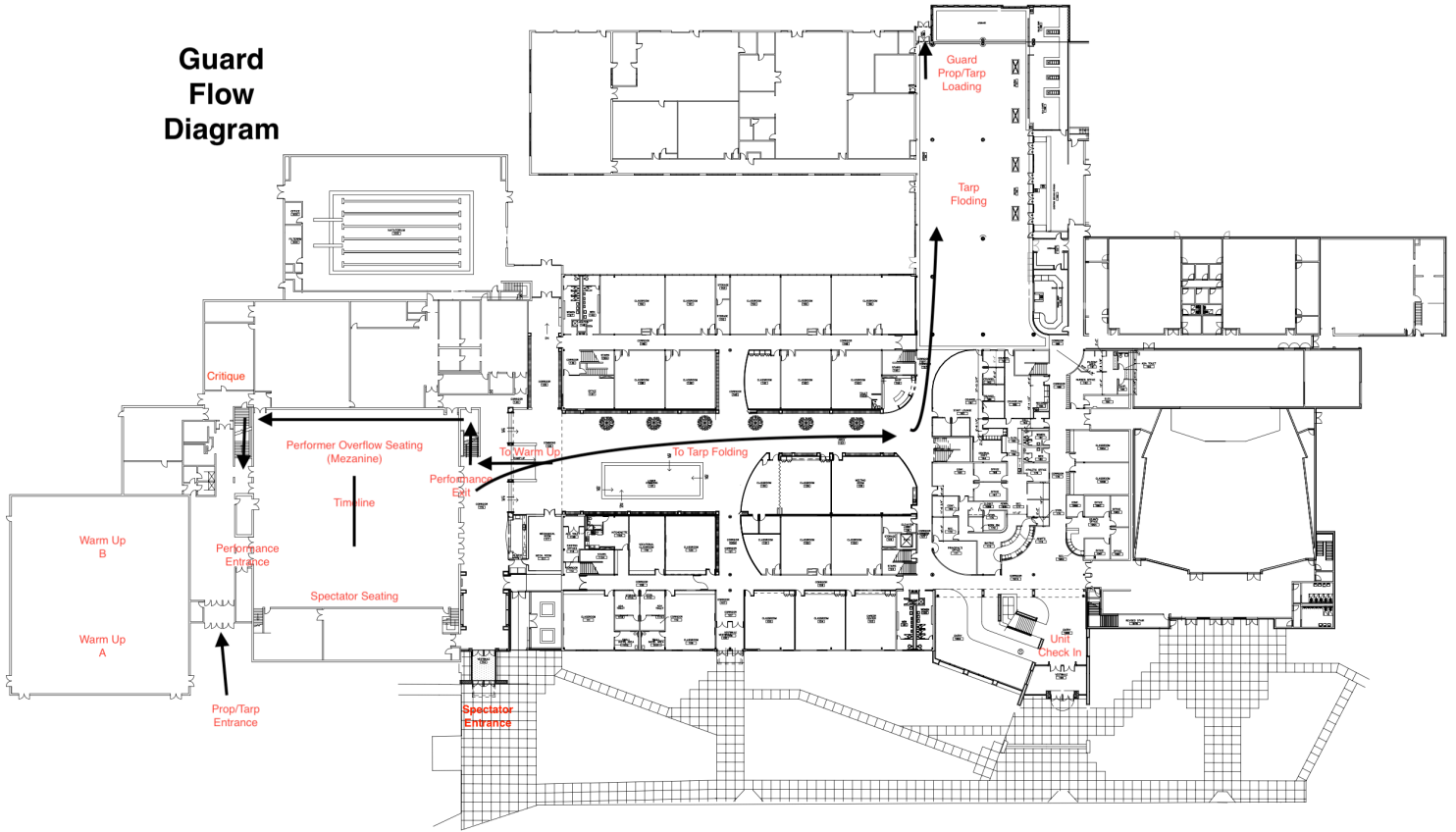
Unit Check In

High S

Equipment Vehicle Parking

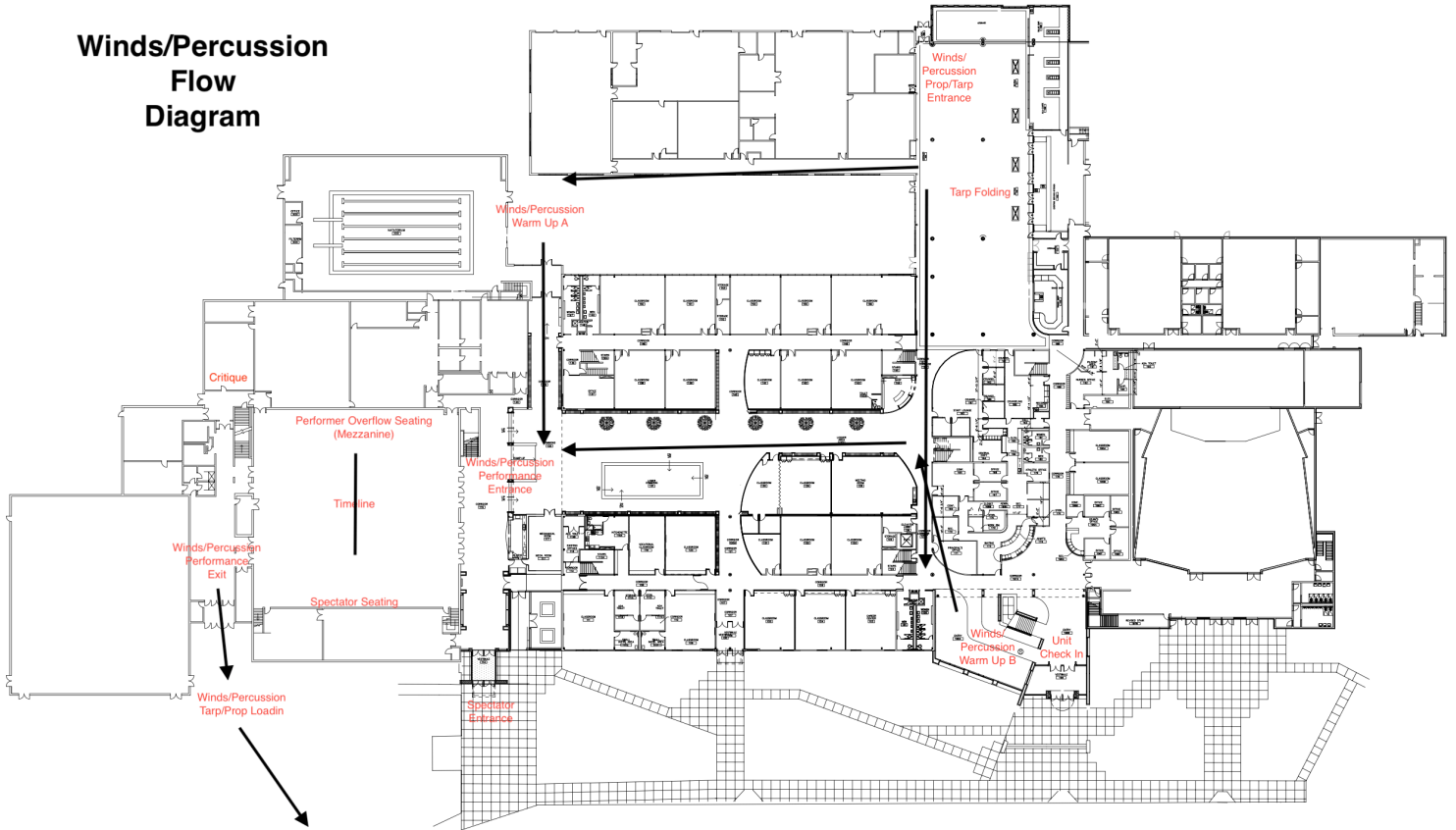
NOTE.....THIS FP IS NOT COMPLETE

Guard Flow Diagram



NOTE.....THIS FP IS NOT COMPLETE

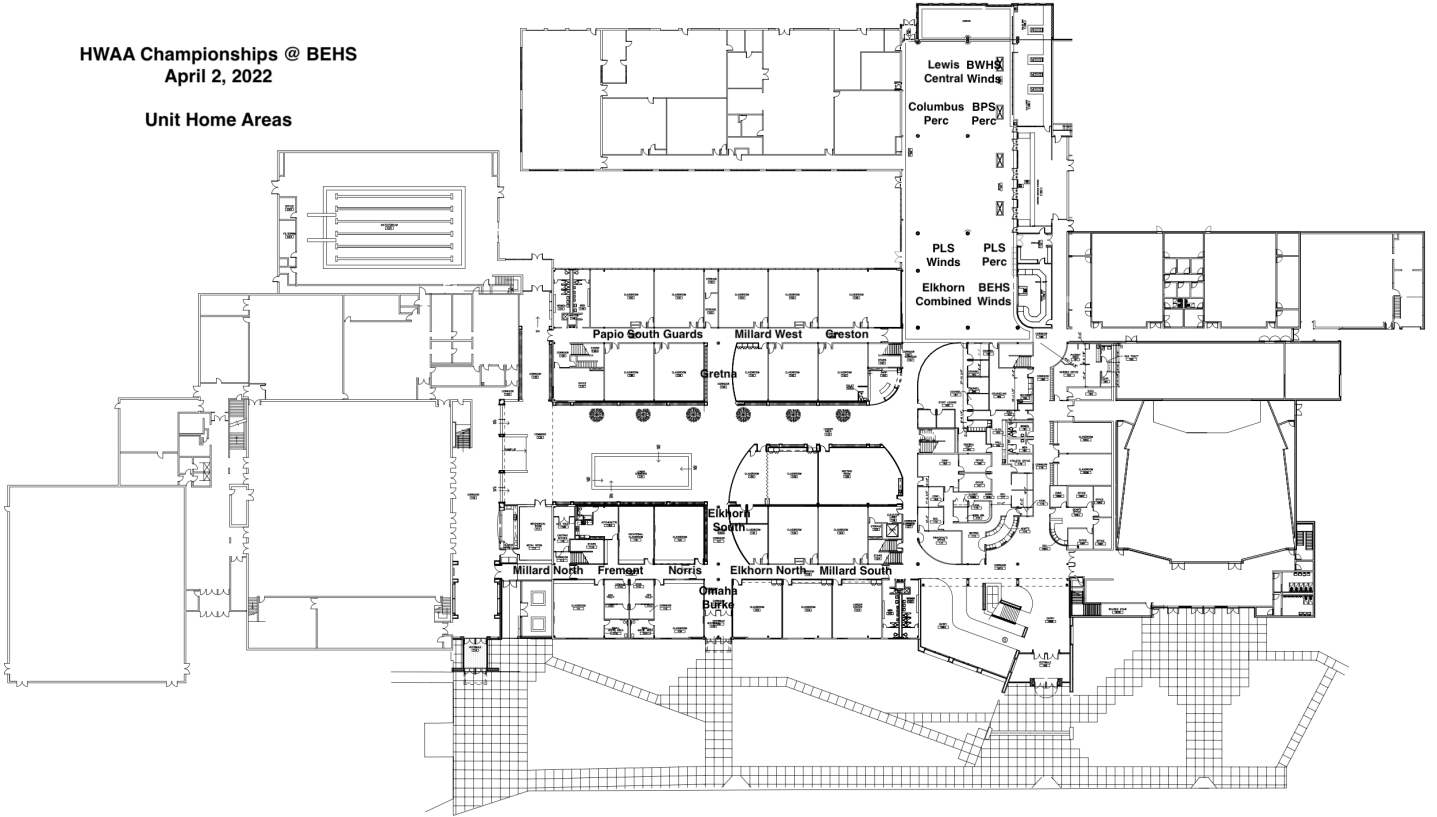
Winds/ Percussion Flow Diagram



NOTE.....THIS FP IS NOT COMPLETE

HWAA Championships @ BEHS
April 2, 2022

Unit Home Areas



HWAA Championships @ BEHS

April 2, 2022

Unit Home Areas

