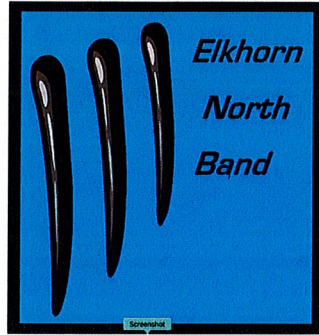


HWAA Week 2 Show

February 10, 2024



Site Host Contact Information

Site Coordinator: Matthew Rom

Site Coordinator Contact Information Before or Day of Contest:

mrom@epsne.org

Cell phone: 402-677-0764

HWAA Contest Director: Jacqueline Pollard

contests@hwaa.org

(402) 378-2839

Elkhorn North High School

17800 George Miller Parkway

Omaha, NE 68116



ELKHORN

PUBLIC SCHOOLS

20650 Glenn Street - Elkhorn, NE 68022 - 402-289-2579 - Fax 402-289-2585 - www.elkhornweb.org

Dear Performers, Instructors, and Music Lovers,

Welcome to Elkhorn North High School for the second HWAA show of 2024! We are incredibly excited to have the opportunity to host this event, and look forward to sharing a wonderful day of indoor marching arts with all of you!

Please make sure that you go the correct school- this event is being held at Elkhorn NORTH High School, which is just North of Maple Street and on the East side of 180th street.

Audiences and individual performers can come in the front door to our school, but equipment trucks, etc. will need to pull ALL the way around to the very far side of the building to unload. The actual access is really easy, but the layout of the grounds kind of hides things when you pull up, so don't be alarmed and think you are going the wrong way, just follow the signs. It's a long way around the building.

We will utilize a vertical timeline for all ensembles.

One additional flow issue for winds and drumlines- please note that our gyms at ENHS are "sunken". The performance floor is at the basement level compared to the rest of the school. For this reason, it is not possible to access the gym floors with wheeled equipment from other levels of the school. Just please make sure to plan properly with any arrival and packing.

Please note that the building will open one hour prior to the start of the first clinics!

The students, parents, and staff of the Elkhorn North High School Instrumental Music program are honored to host all of the performing groups this weekend, and look forward to making this show successful for all involved, including the audience here to perform the vital role of cheering on each unit! If there is anything we can do to make your experience even better, please don't hesitate to ask!

Sincerely,

Matthew Rom

DIRECTIONS

- o Elkhorn North High School is located at 17800 George Miller Parkway, Omaha, Nebraska. The easiest direction to get there is from 180th and Maple. The school is on the right side of 180th street, on the first road north of Maple. Turn left at the roundabout. The main entrance is on the South side of the building, and is hard to miss.

MAPS

- o Please find the following maps to assist you throughout the day:
 - **Home area map**
 - **Exterior Map of Elkhorn North High School with loading zones and parking labeled**
 - **Gym Layout of Elkhorn North High School with relevant lines labeled.**

PARKING

- o Bus Parking: buses can park in the far corner of the front lot.
- o Equipment Truck Parking:
 - Travel on the frontage road ALL the way around the school to the southeast corner, where you will find a circle lot with easy access for loading and unloading. You may park in the circle lot with equipment trucks. Individual participants should NOT park there.
- o Spectator Parking: Spectators will park in the main student lot South of the school.

UNIT CHECK-IN

- o Performers may enter through the main doors to the school along with the audience. Unit directors should check in at the ticket table.
- o At the check-in table, passes for participants and 7 staff/volunteers will be provided. If you have late arriving staff members, leave their names with check-in staff at the time of check-in.
- o If you have more than 7 staff/volunteers, admission will need to be purchased to enter the performance gym, even if they are assisting you with the performance.
- o Each unit will receive one video pass to be used for your unit only.

EQUIPMENT DROP OFF

- o All props should be dropped off at the marked doors on the Southeast corner of the school near the circle drive. There is a vestibule area and a hallway that props and other extra equipment may be stored directly inside of those doors, and right next to the warmup area. This is not a check-in area, units need to go to the front doors to get passes and be directed to their Home area.
- o Any carts, etc. should be moved either WITH the unit or down the hallway as they begin their performance sequence, as all props and equipment will leave out different doors on the other end of the gym.
- o There will be a designated area in the warmup gym to hold percussion equipment and for you to do final assembly.

HOMEROOMS/TEAM AREAS

- o Each participating school/unit will be assigned an area in the hallway to utilize as a home space for getting ready. No dressing rooms will be provided other than the public restrooms spread throughout the building.
- o Every area, except for the warm-up area, is a "No Spinning" and "No Playing" Zone.
- o Please do not go into any classrooms, as they are not part of anyone's home room area.
- o No food or drinks other than water should be brought anywhere in the school other than the commons.

WARM-UP AREA

- o Units have been assigned a Warm-up Area. Groups may use the time as they see fit.
- o Percussion and Winds Units are NOT permitted to march in warm-up.
- o Warm-up area supervisors will alert units when there are five minutes and one minute remaining.

- o Units must leave on time to allow for transit to the on-deck area, as well as to allow the unit after them the full amount of warm-up time.

PERFORMANCE AREA

- o This show will use a **Vertical** time line for all events.
- o Units will wait to perform in the designated "on-deck" areas at the designated time.
- o **Units will enter from the North East corner of the gym, and exit from the South West corner.**
- o Music checks are recommended for guards.
- o Music checks must be done prior to the start of the show or during the breaks.
- o **Host site will plan to play music tracks via CompetitionSuite, but can accommodate ipods/ipads/mp3 players with a standard stereo input if needed. Please do not bring a CD.**
- o **The competition floor will have an extension cord bringing power to the front-center of the floor.**

SPECTATOR ENTRANCE

- o Spectators will enter the school through the main doors on the South side of the school.
- o Performing groups are asked to sit in the bleachers on the East side of the gym.
- o As set by HWAA Contest Rules admission prices are \$15 for adults and \$10 for students. Children under 5 years old are free. Cash and Cards will be accepted at admission.

CONCESSIONS

- o A full concession stand with dinner and snack options will be available throughout the day, opening mid afternoon and running until the completion of the competition. Cash and cards will be accepted at the Concession stand.

SHOUT OUTS

- o A limited quantity of shout outs will be available near the admission table for \$5 and will be cash only.

JUDGES CRITIQUE

- o This is an adjudicated show. Judges' critique will follow the end of the guard and percussion portions. Directors and staff are encouraged to take this opportunity to review the performance with the judges in location of critique.

ADDITIONAL INFORMATION

- o In accordance with HWAA Membership and Contest Rules, Section VII.F
 - o Section 1: Flash photography is strictly prohibited during the performance, as it is distracting to the performers and may cause injury. Photography without the use of flash permitted
 - o Section 2: Individuals will be allowed to only record their own unit during season contest. Any person in violation of this will be asked to leave the premises or the device will be confiscated until the conclusion of the contest.
 - o The video recording policy shall apply to all video recorders, camcorders, digital cameras, cell phones, iPads, tablets, and other devices with video and audio capability
- o There will be no guides to take your groups to warm up, please familiarize yourself with the layout and follow the signs. Please note that to get to the warmup zone you will have to go through the performance gym, and may be asked to hold until the conclusion of a performance, so it is wise to start moving your units a couple extra minutes early.
- o At the conclusion of your performance, after leaving the floor, you will need to cross through the performance gym on your way back to the home room area. Your unit will need to hold in the stairway area until the conclusion of any next performance.
- o **The building will open one hour prior to the first clinic.**
- o All Elkhorn Public Schools Facilities are Tobacco and Vape Free zones.

**ENHS Building Map
HWAA Contest
February 10, 2024**

- 1. Millard West
- 2. Millard South
- 3. Millard North
- 4. OWA
- 5.
- 6. Bellevue East
- 7. Creston
- 8. Westside
- 9. OPS
- 10.
- 11. Gretna East
- 12.

- 13. Gretna
- 14. Sioux Falls Roosevelt
- 15.
- 16.
- 17. Elkhorn

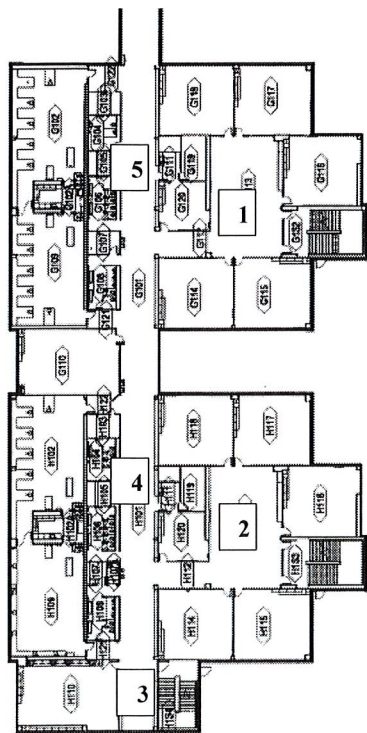
Equipment/Tarp
Loading/unloading

- A. Director Lounge
- B. Judge/HWAA
area/critiques (this
is UPSTAIRS)
- C. Concessions

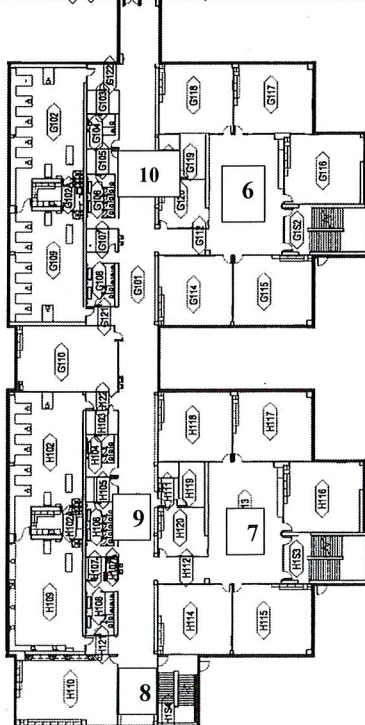
Commons

Check-in

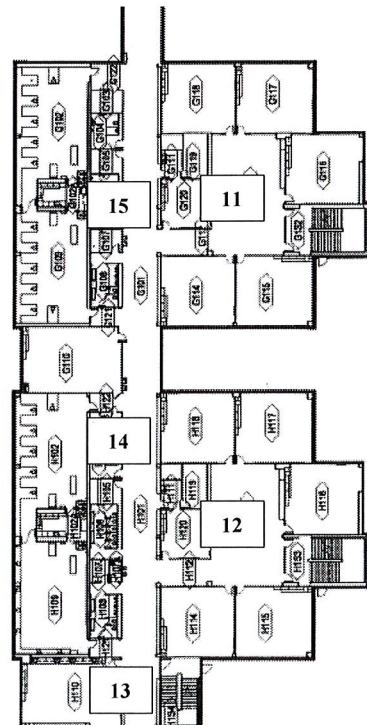
Main Entrance



Lower level
(0 floor)



Main level
(1st floor)



Upper level
(2nd floor)

